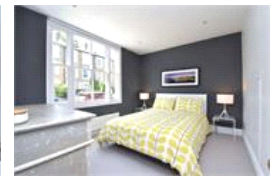
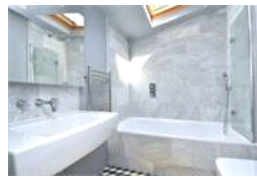
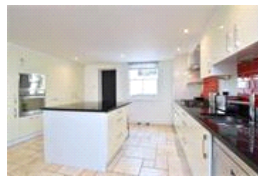
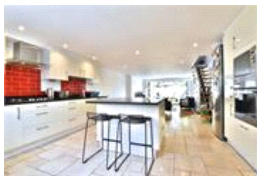


Mount Ash Road, SE26 (3 Bedroom House)

£2,350/month



property description

Available beginning November 2017. Prepare to be amazed by this exceptional 3 bedroom (3 double bedrooms with a study/nursery) early Victorian family home located on this popular, friendly cul-de-sac, which is close to an 'Outstanding' Ofsted rated primary school and within walking distance of three mainline train stations - Forest Hill, Sydenham, and Sydenham Hill. The whole street is lined by these attractive terraced houses, however this one in particular has been architecturally redesigned and extended to create an abundance of well-proportioned living space set over three floors. The vendors have also completely redecorated before coming on the market to create a stylish and immaculate...

property features

- Architecturally redesigned 3 bedroom early Victorian family home
- Amazing living and entertaining open-plan kitchen reception room
- Stylish and immaculate interior
- Luxurious bathroom and en-suite shower room
- Landscaped rear garden
- Close to an 'Outstanding' Ofsted rated primary school and 3 mainline train stations

ALPS Estates Ltd trading as Pickwick Estates
47 Honor Oak Park Honor Oak
London, SE23 1EA, United Kingdom
Reg No : 7444750
Registered in England

Telephone : 020 3397 1166
Website : <http://www.pickwickestates.co.uk>



Mount Ash Road



Approximate Gross Internal Area
1322 sq ft / 122.8 sq m
Illustration for identification purposes only.
measurements are approximate.
Drawn for Pickwick Estates.

For Full EPC information, click [here](#)