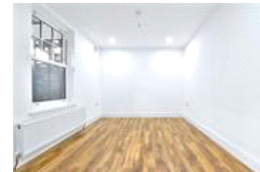
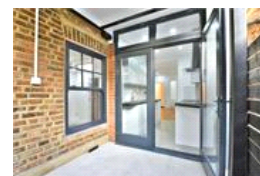
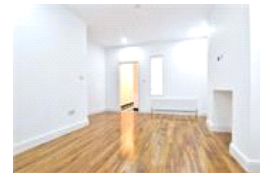
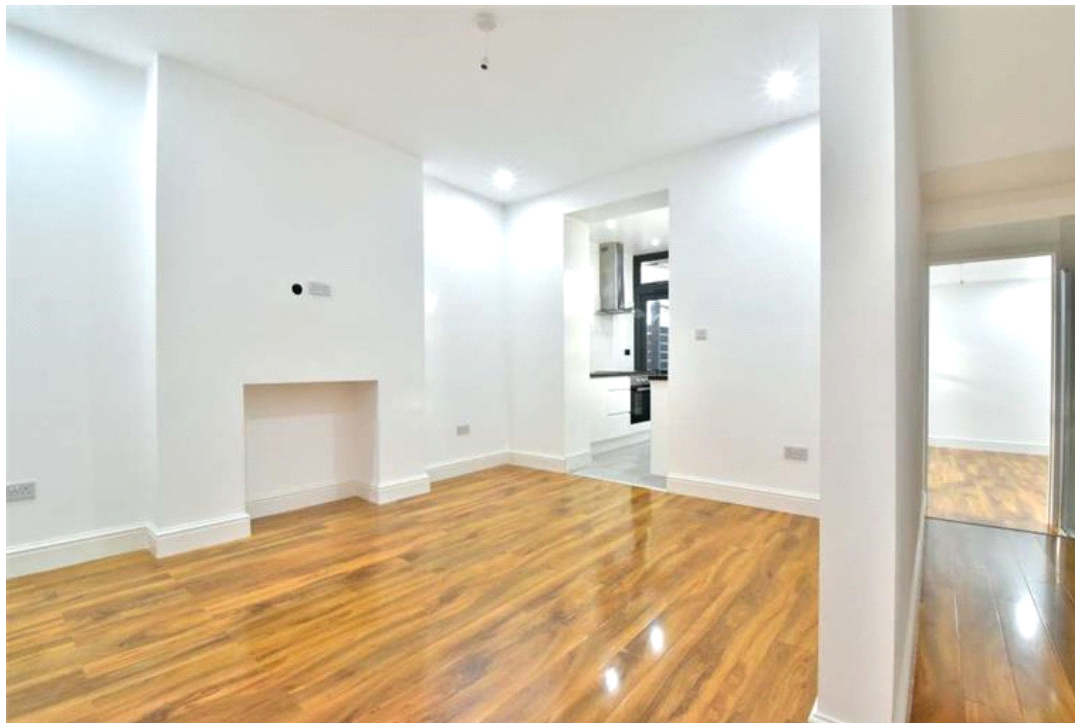


Brockley Rise, SE23 (2 Bedroom Flat)

£1,500/month



property description

ALL BILLS INCLUDED...Pickwick Estates are pleased to be marketing this lovely newly refurbished two bedroom ground floor apartment to rent. Offering a large reception room, modern fitted kitchen and modern shower room with separate WC. further benefits include original features with the property and a court yard garden. Great commuter links to Canada Water, Canary Wharf and London Bridge. Available now and unfurnished.

property features

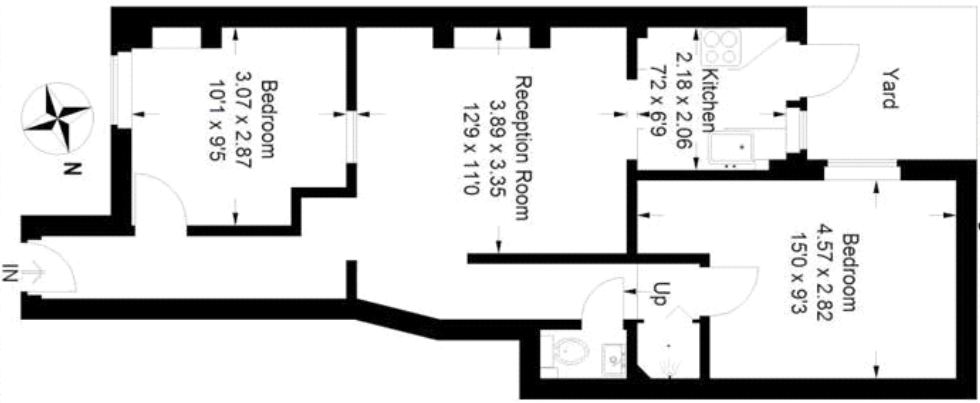
- 2 Bedroom ground floor flat
- Newly refurbished
- Close to a convenient parade of shops
- All bills included
- Close to Honor Oak Park and Forrest Hill Station
- Available now

Brockley Rise, SE23 (2 Bedroom Flat)

£1,500/month



Brockley Rise



Approximate Gross Internal Area = 50 sq m / 538 sq ft
Illustration for identification purposes only,
measurements are approximate.
Drawn for Pickwick Estates

For Full EPC Information, click [here](#)