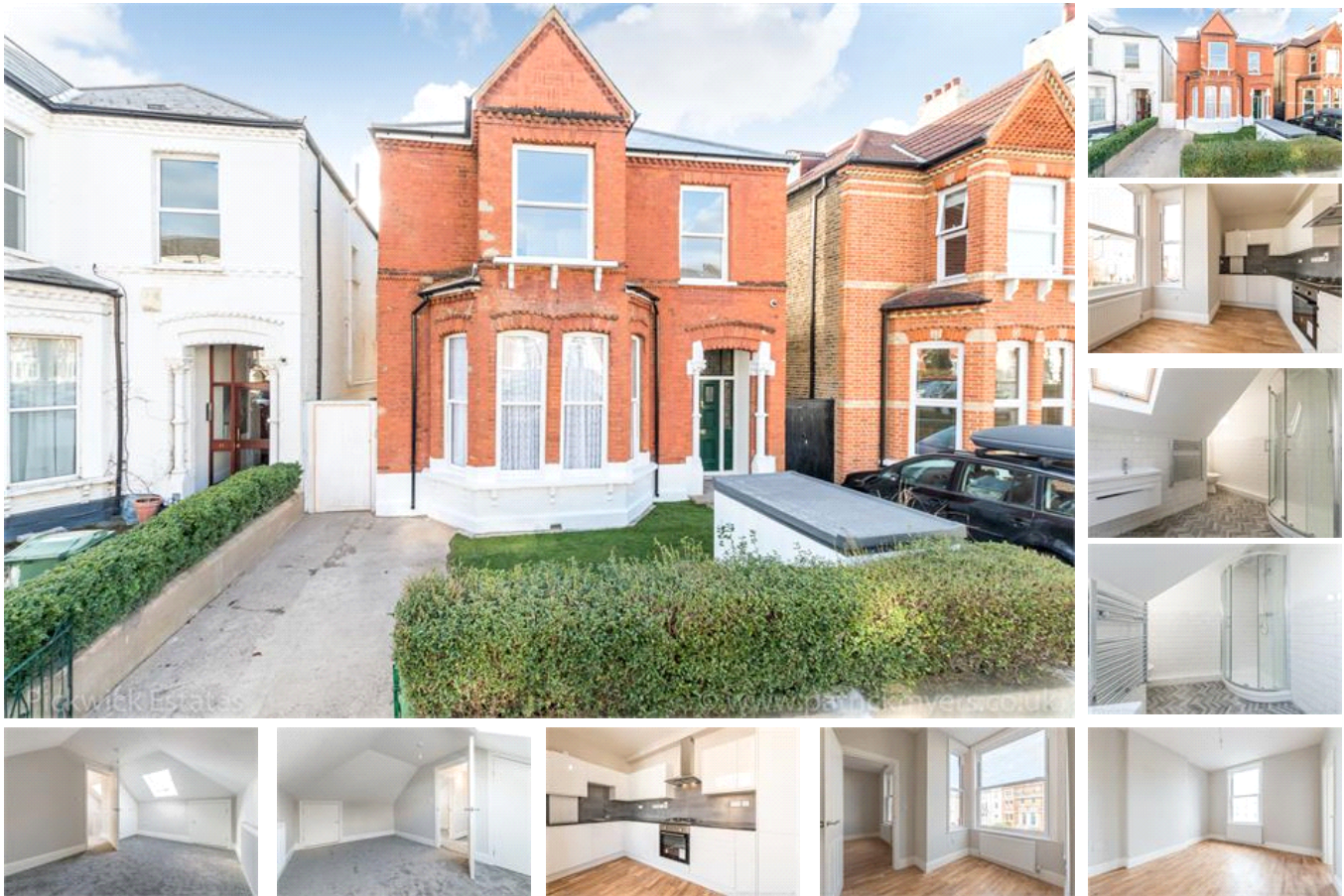


Rosendale Road , SE21 (2 Bedroom Flat)

£1,500/month



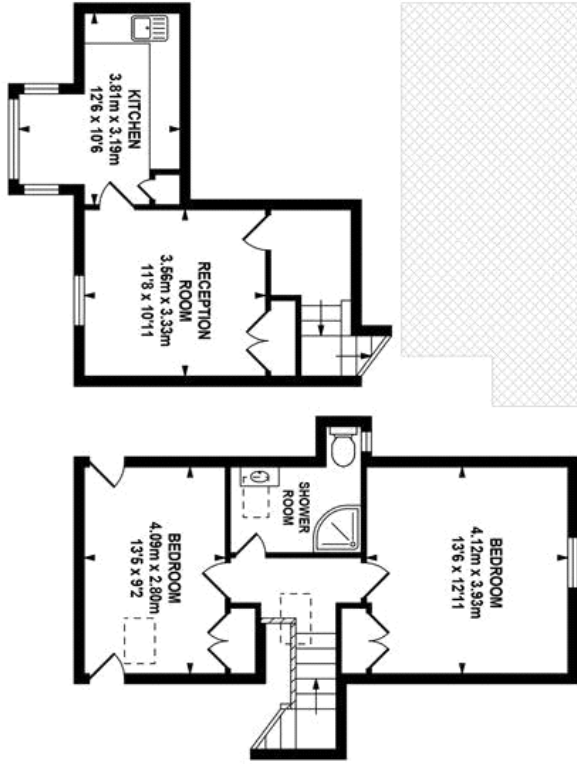
property description

The last lick of paint has just dried on the wall on this stunning top floor two double bedroom Victorian conversion flat in a very popular road in west Dulwich. Everything is brand new and the flat is ready to move straight into. The kitchen is fully fitted and has plenty of space for a table and chairs and the large shower room has been stylishly decorated and has a heated towel rail. The property is ideal for sharers as it is split level to give you privacy when you need it and is just a short walk to West Dulwich station. The flat is available straight away.

property features

- Two Double bedrooms
- Modern shower room
- Full fitted kitchen
- Available immediately
- Close to West Dulwich station
- Unfurnished





pickwick estates

What every effort is made to accurately reproduce these floor plans, measurements are approximate, not to scale and for illustrative purposes only.
 © Dulwich Energy Assessors Ltd. www.dwa3d.co.uk

For Full EPC information, click [here](#)