

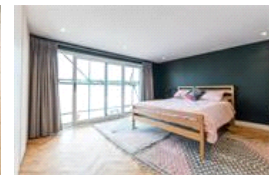
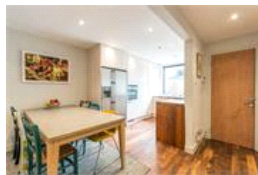
Hindmans Road, SE22 (4 Bedroom House)

£2,750/month



Pickwick Estates

© www.patrickmyers.co.uk



## property description

Situated on a quiet residential road but just a short walk away from the hustle and bustle of Lordship Lane with its shops, bars and restaurants. Great transport links to central London including East Dulwich station that will take you to London Bridge in 10 minutes. Plus some of the most sought after schools both private and state. The property briefly comprises of four bedrooms, two bathrooms one of which is en-suite. Downstairs there is a large reception room, kitchen and dining room plus a handy cloakroom. The property has a lovely garden and off street parking. Available early September.

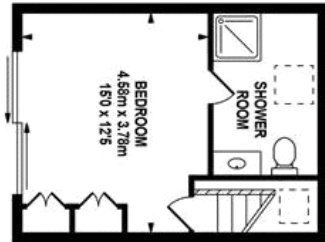
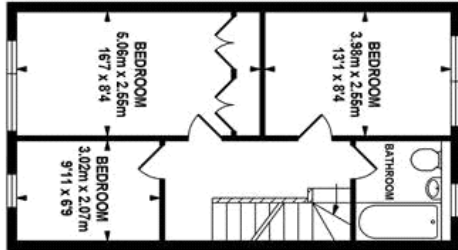
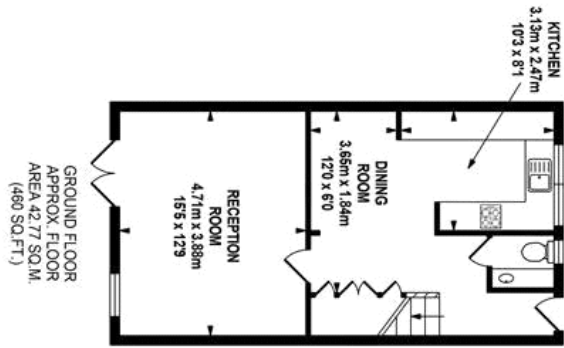
## property features

- Four bedrooms
- Two bathrooms
- Fully fitted kitchen
- Close to transport
- Off street parking
- Close to Lordship Lane
- Unfurnished
- Close to shops, bars and restaurants

ALPS Estates Ltd trading as Pickwick Estates  
8 Woodward Road Dulwich  
London, SE22 8UJ, United Kingdom  
Reg No : 4270797  
Registered in England

Telephone : 020 3397 1144  
Website : <http://www.pickwickestates.co.uk>





dickwick estates

**TOTAL APPROX.FLOOR AREA 114.97 SQ.M. (1238 SQ.FT.)**

Whilst every effort is made to accurately reproduce these floor plans, measurements are approximate, not to scale and for illustrative purposes only.

© Duwack Energy Assessors Ltd 100020841d.co.uk

For Full EPC information, click [here](#)