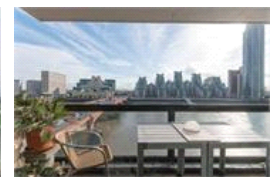
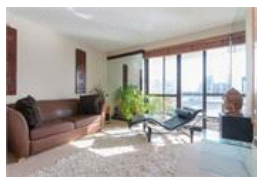
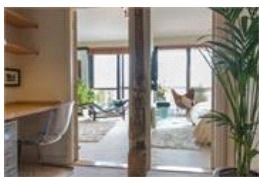
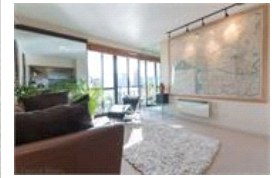
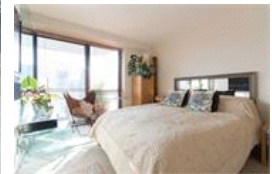
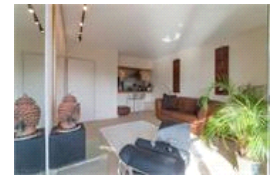


Rivermill, SW1V (1 bedroom Flat)

£1,800/month



property description

Stunning one-bedroom apartment on the 5th floor of this popular modern building. The flat has been maintained to a high standard throughout with a South facing riverside balcony offering impressive views over the River Thames and Vauxhall Bridge. The property, which is presented furnished, consists of a reception room with a south facing riverside balcony, semi open planned stainless-steel effect kitchen with integrated appliances, a master bedroom with fitted wardrobes, a fully tiled bathroom with heated towel rail, bathtub, overhead shower and glass screen. Other benefits include carpets throughout living areas, an office space in the hallway, a porter and a private parking space (avail...

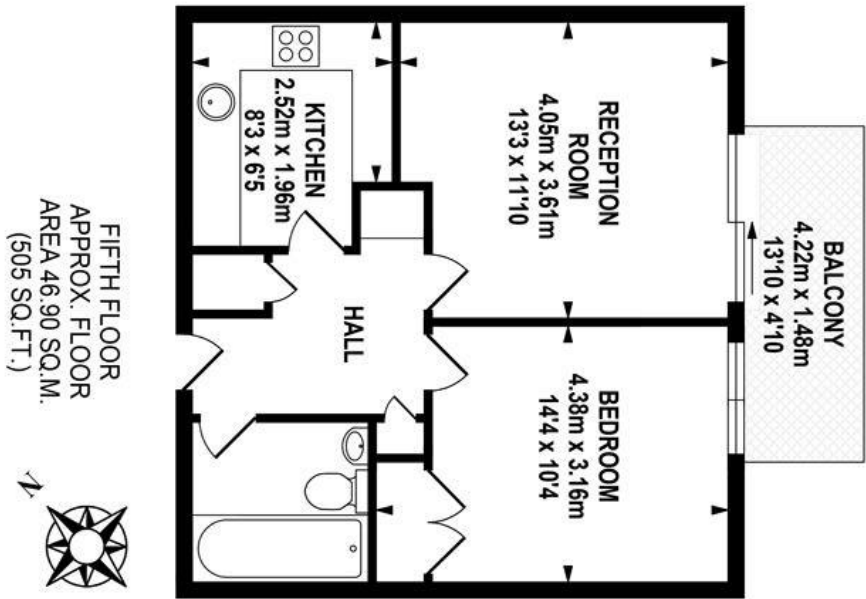
property features

- Stunning one bedroom apartment
- South facing balcony overlooking the River Thames
- Reception room
- Furnished
- Semi open planned kitchen
- Master bedroom with wardrobes
- Bathroom with shower above bath
- Office space

ALPS Estates Ltd trading as Pickwick Estates
47 Honor Oak Park Honor Oak
London, SE23 1EA, United Kingdom
Reg No : 7444750
Registered in England

Telephone : 020 3397 1166
Website : <https://www.pickwickestates.co.uk>





TOTAL APPROX.FLOOR AREA 46.90 SQ.M. (505 SQ.FT.)

Whilst every effort is made to accurately reproduce these floor plans, measurements are approximate, not to scale and for illustrative purposes only.
© Dulwich Energy Assessors Ltd. www.dea-ltd.co.uk

For Full EPC information, click [here](#)