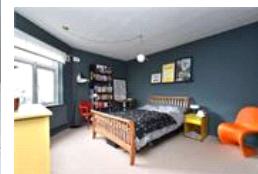
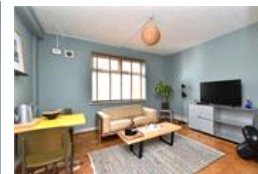
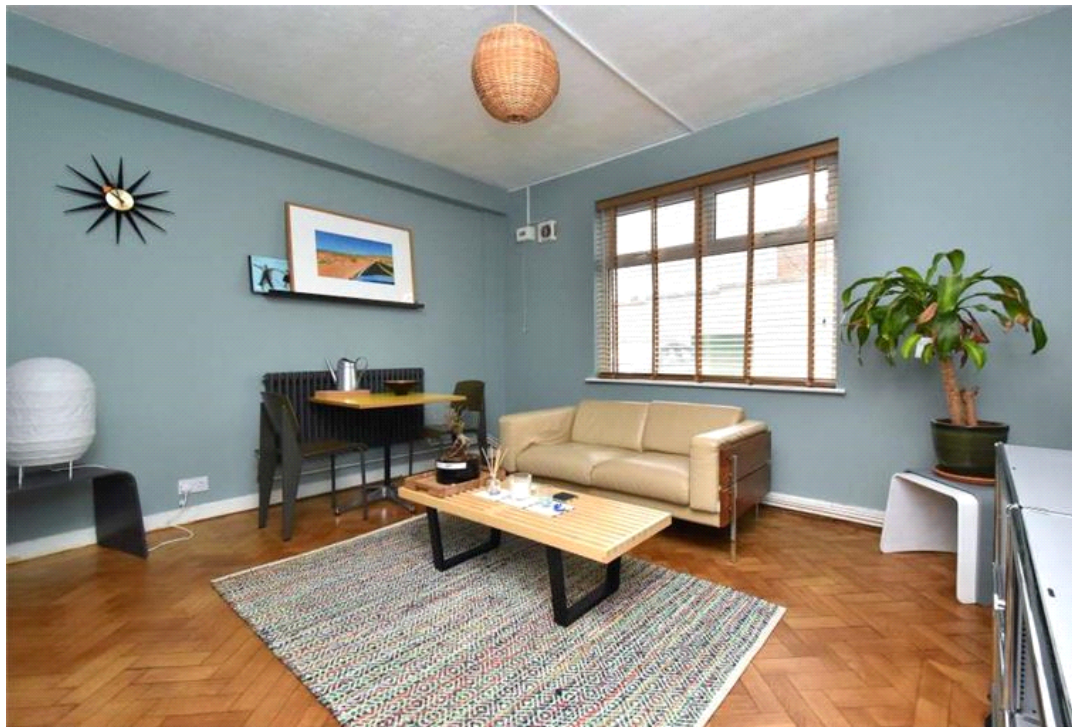


Forest Croft, SE23 (1 Bedroom Flat)

£325,000



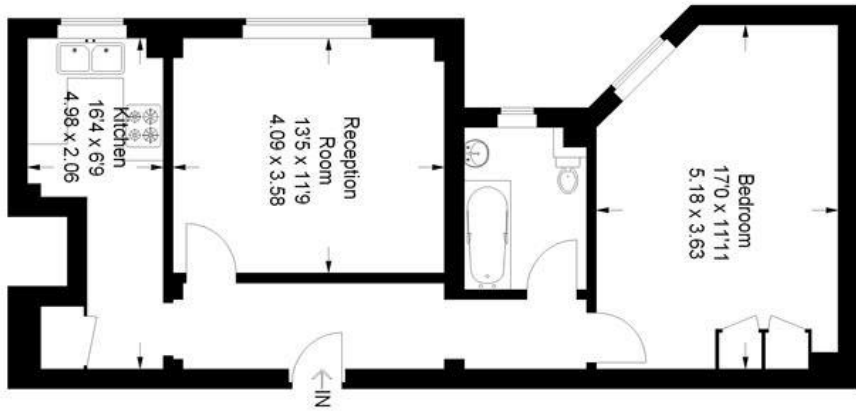
property description

Spacious ground floor apartment set within a handsome 1930s Art Deco block, the flat also comes with its own private GARAGE and has a SHARE OF FREEHOLD! The flat is double glazed throughout and briefly comprises a separate kitchen with base and wall mounted units and space for a washing machine, fridge and oven. There is a good size a reception room and large double bedroom. The bathroom has a white 3 piece suite with shower over the bath, it is partially tiled with laminate wooden flooring and has a heated towel rail. Taymount Rise is situated off London Road in Forest Hill. The nearest station is Forest Hill with regular Overground connections as well as National Rail links to London Bridge. There are plenty of shops bars and restaurants locally and regular buses to take you to central London as well. Just a few stops away is East Dulwich, Dulwich Park and Village, all are within easy reach. Forest Croft also benefits from having off street parking and communal gardens. viewings are highly recommended

property features

- Ground floor flat
- Double sized bedroom
- Large reception room
- Private garage
- Close proximity to Forest Hill train station
- Share of freehold





Ground Floor Forest Croft



Approximate Gross Internal Area
607 sq ft / 56.4 sq m
Illustration for identification purposes only.
measurements are approximate.
Drawn for Pickwick Estates.

For Full EPC information, click [here](#)