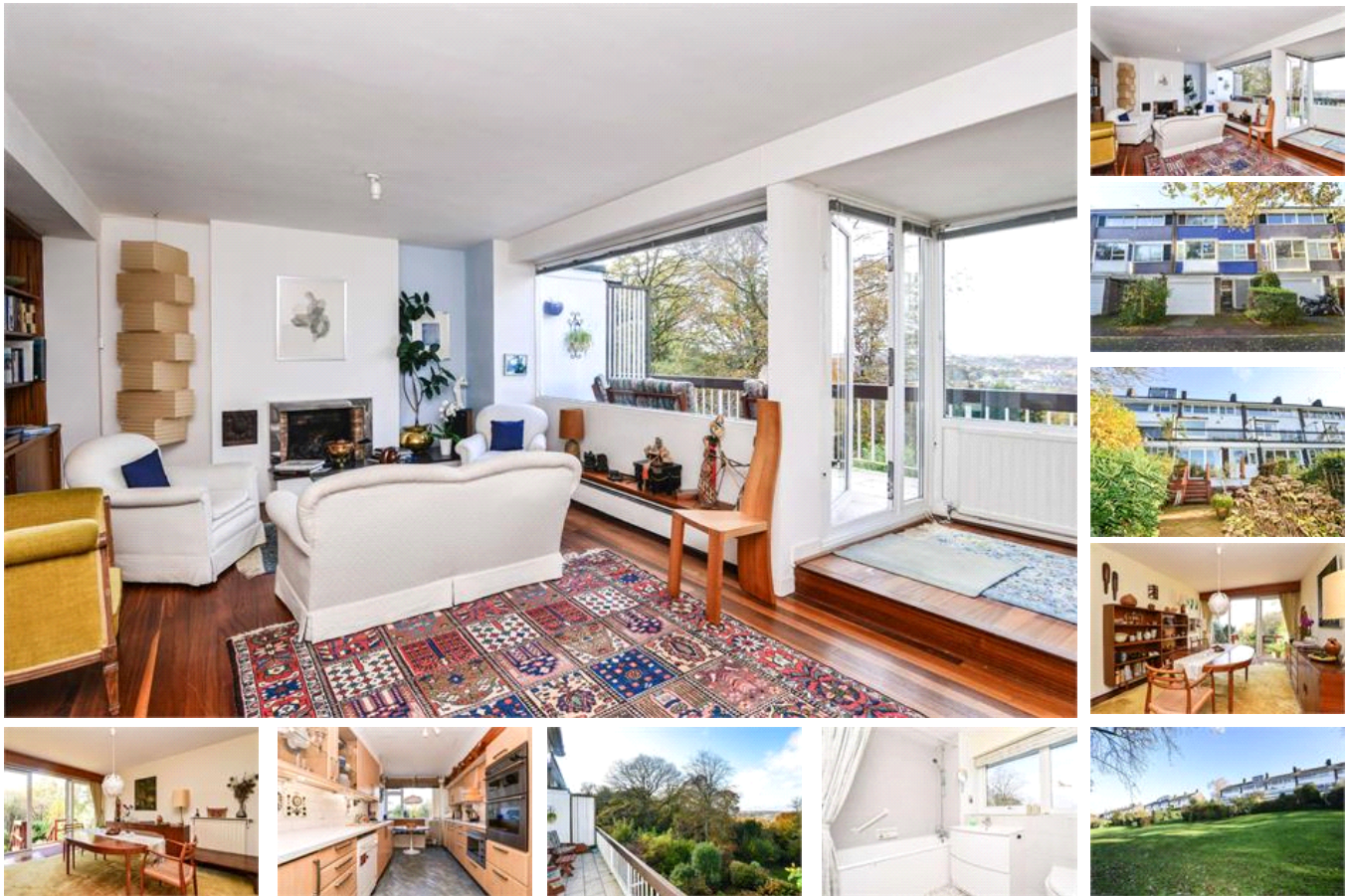


Woodsyre , SE26 (4 bedroom House)

£1,100,000



property description

Located on this popular private road within the prestigious Dulwich Estate is this lovely mid-century modern four-bedroom family townhouse which enjoys panoramic viewing across Dulwich Woods and breath-taking views of the London skyline. The property benefits from a beautifully landscaped westerly facing private rear garden with a balcony above and privileged use of the Estate parkland beyond. These unique townhouses offer plenty of light and spacious, flexible living accommodation set over three floors. Features include a lovely first floor reception with a balcony that catches spectacular sunsets from the west, Kitchen and dining room on the ground floor with direct access to the neat...

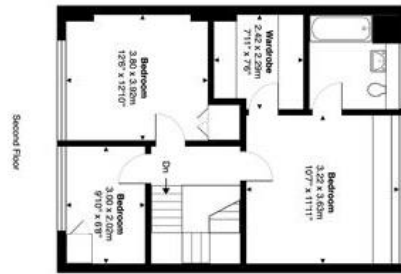
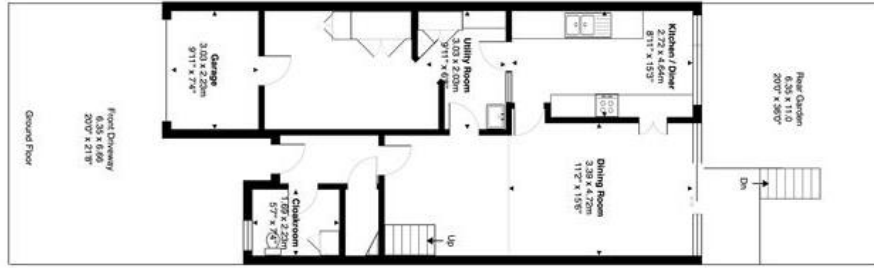
property features

- Attractive mid century modern four bedroom terraced townhouse
- Prestigious area close to schools & amenities
- Sydenham Hill location within Dulwich Estate
- Well equipped kitchen and utility room
- Converted garage and off-street parking
- Three light and spacious 3 reception rooms
- Westward facing balcony overlooking Dulwich Woods
- Master bedroom with dressing room and en...

ALPS Estates Ltd trading as Pickwick Estates
 47 Honor Oak Park Honor Oak
 London, SE23 1EA, United Kingdom
 Reg No : 7444750
 Registered in England

Telephone : 020 3397 1166
 Website : <https://www.pickwickestates.co.uk>





Woodsyre, SE26
Total Area: 190.9 m² ... 2055 ft² (including terrace)

This Floorplan is provided without warranty of any kind. Bespoke Plans does not accept any liability for errors, omissions, inaccuracies, or any other loss or damage without limitation, arising in whole or in part from the use of any information.



For Full EPC information, click [here](#)