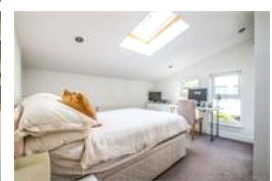
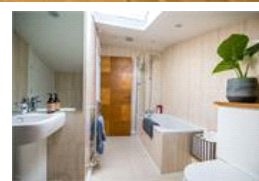
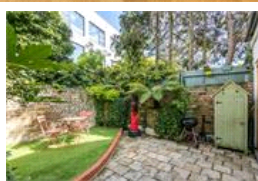
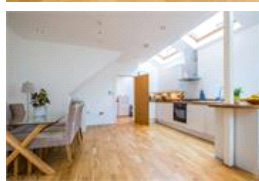
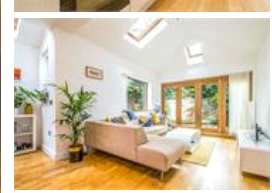
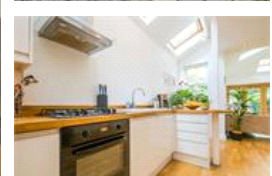
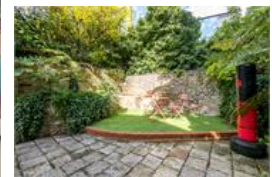


Halsmere Road, SE5 (3 bedroom House)

£825,000



### property description

An utterly unique and stylish 3-bedroom, 3 storey house with a charming private rear garden and plenty of nicely decorated internal floor space (104 sqm 1124 sq ft). The house is set to the rear of a pretty red brick, end of terrace Victorian house, located on this very quiet residential street, just off the green open spaces of Myatt's Fields Park in the heart of Camberwell. The house is located to the rear of the main Victorian house with its front door is located down a path to the side of the house, making this property private and extremely quiet. The path is lit up at night by motion sensor lighting so you will always find your way and it leads all the way down to rear of the house...

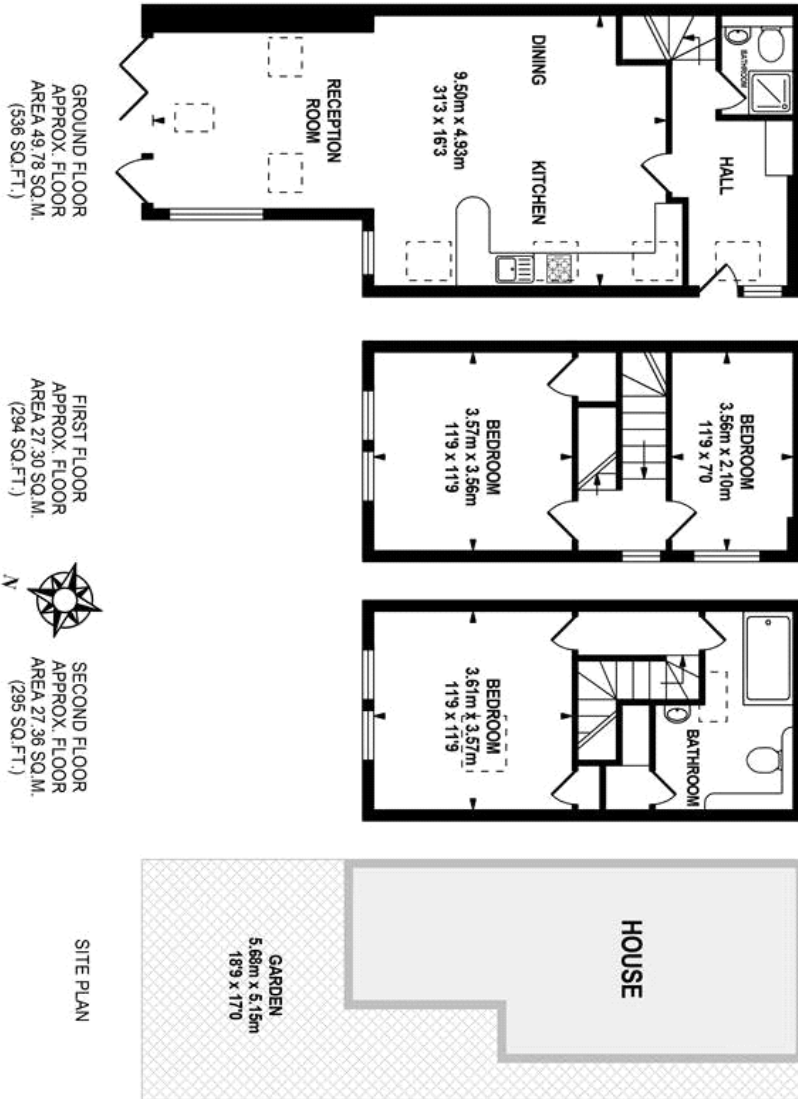
### property features

- A unique and stylish 3 bedroom end of terrace house
- Charming private rear garden
- Offering plenty of internal floor space 104 sqm / 1124 sq ft
- Quiet residential street
- Superb 9.5m long, open plan kitchen, dining, reception room
- Down stairs guest shower room and upper floor family bathroom

ALPS Estates Ltd trading as Pickwick Estates  
 47 Honor Oak Park Honor Oak  
 London, SE23 1EA, United Kingdom  
 Reg No : 7444750  
 Registered in England

Telephone : 020 3397 1166  
 Website : <https://www.pickwickestates.co.uk>





Whilst every effort is made to accurately reproduce these floor plans, measurements are approximate, not to scale and for illustrative purposes only.  
© Dutch Energy Assessors Ltd. [www.dutchenergyassessors.co.uk](http://www.dutchenergyassessors.co.uk)

For Full EPC information, click [here](#)