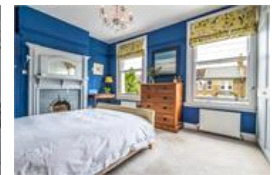
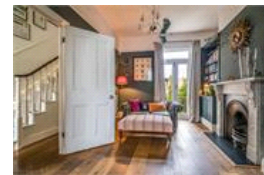
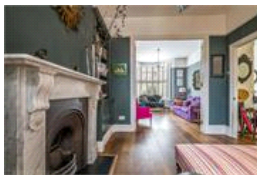


Braxfield Road, SE4 (5 bedroom House)

£950,000



property description

LAUNCHING SATURDAY 8TH MAY. Beautifully presented with an elegant and sophisticated décor throughout, is this lovely 5 double bedroom, Victorian family home offering plenty of period features and bundles of character and charm. The house has been lovingly renovated by the current owners through their years of ownership, including replacing all the windows for double glazing, the front sash windows have been replaced with wooden framed ones to retain the character of this lovely house. This handsome Victorian mid terrace property has plenty of kerb appeal with an impressive period façade of exposed London stock bricks, complimented with detailed masonry surrounding the sash windows and ...

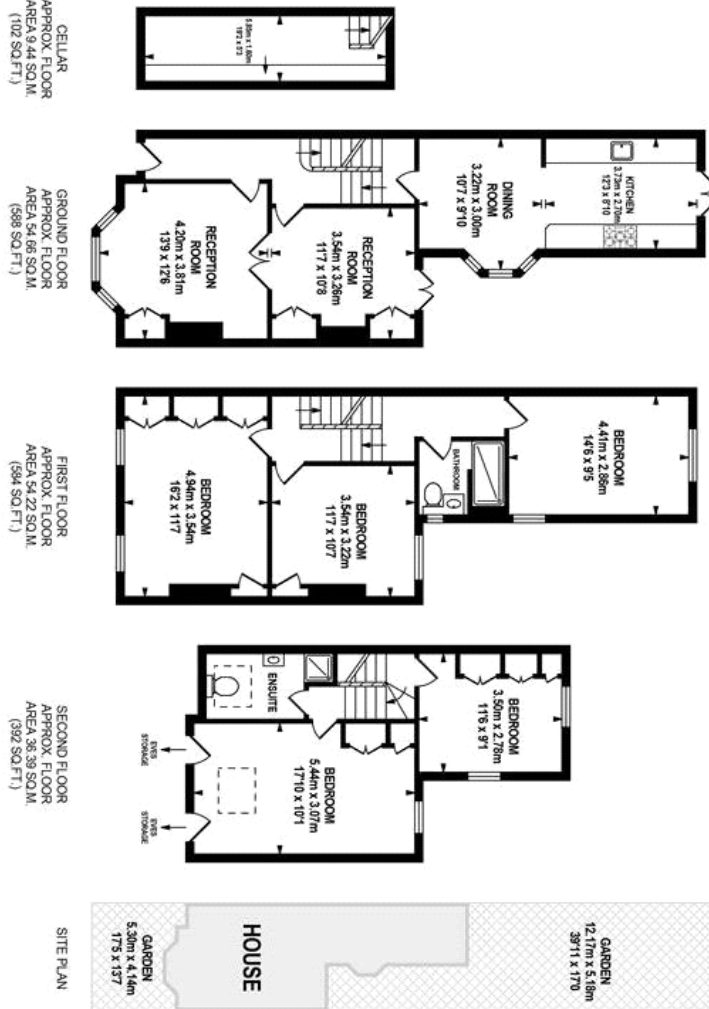
property features

- Beautifully presented 5 double bedroom Victorian family home
- Approximatley 40ft (12m) private landscaped rear garden and a neatly landscaped walled front garden
- Lots of period features including working fireplaces, a wood burner and high ceilings with corning
- Kitchen dining room with under floor heating
- Two luxuriously decorated shower rooms

ALPS Estates Ltd trading as Pickwick Estates
47 Honor Oak Park Honor Oak
London, SE23 1EA, United Kingdom
Reg No : 7444750
Registered in England

Telephone : 020 3397 1166
Website : <https://www.pickwickestates.co.uk>





 pickwick estates

Whilst every effort is made to accurately reproduce these floor plans, measurements are taken from the architectural drawings and are not intended to be used as a basis for any legal proceedings. © Duvalon Energy Resources Ltd www.duvalon.co.uk

For Full EPC information, click [here](#)