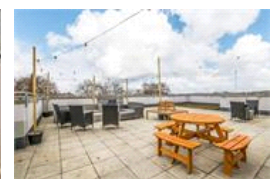
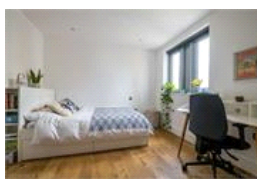
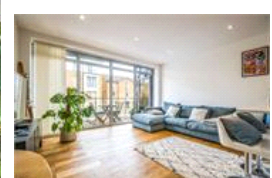
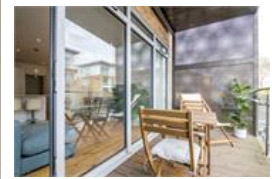


Tribeca Court, SE22 (2 bedroom)

£695,000



property description

Offering opulence and style is this stunning 2 bedroom, 2 bathroom apartment, located on the first floor of this exclusive high specification development in the heart of East Dulwich. The apartment extends to 933 sq ft (86.69 sq m) and benefits from a private balcony off the reception room. The apartment also comes with a secure underground parking space, double glazing throughout, hardwood engineered flooring through all living and bedrooms with zoned underfloor heating, and there is access to the communal roof terrace which has spectacular 360-degree views across London. A great social outdoor space to entertain guests, this impressive view is even better at night when the city sparkles! ...

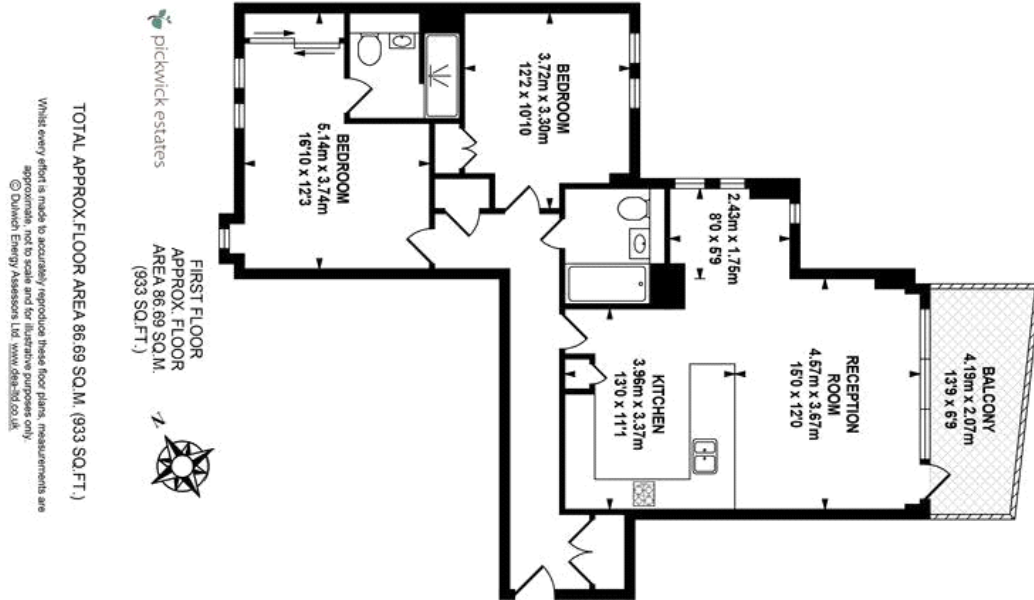
property features

- Stylish 2 double bedroom apartment in a modern new build development
- First floor with a private balcony
- Well maintained building with a lift and secure underground parking
- Communal roof terrace with 360-degree views over London
- Designer kitchen with integrated appliances
- Spacious reception room with a dining area
- Hardwood flooring throughout with zoned ...

ALPS Estates Ltd trading as Pickwick Estates
47 Honor Oak Park Honor Oak
London, SE23 1EA, United Kingdom
Reg No : 7444750
Registered in England

Telephone : 020 3397 1166
Website : <https://www.pickwickestates.co.uk>





For Full EPC information, click [here](#)